

Safety-Gram

Title 45, Chapter 11

April 2025

Volume 26, Number 4

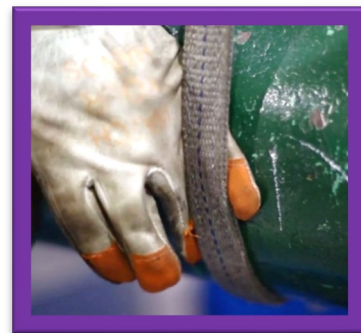
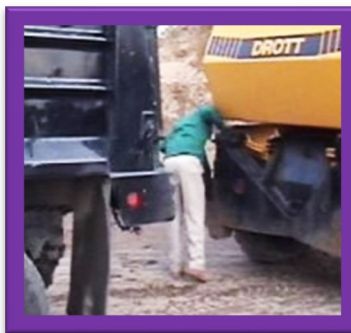
Four Hidden Hazards of Heavy Equipment

Heavy equipment can handle tough tasks, but with large machines come big risks. Recognizing the hazards is the first step in mitigating those risks.

BLIND SPOTS AND VISIBILITY ISSUES

One of the most significant hidden hazards associated with heavy equipment is **blind spots**. Operators often have **limited visibility** of their surroundings, which can lead to accidents involving other equipment or workers on the ground.

Best Practices: Always conduct a thorough **walk-around inspection** before operating any heavy equipment. Familiarize yourself with the machine's blind spots & **communicate** with your team. **Use spotters** when operating in tight spaces or near other workers.



EQUIPMENT STABILITY AND OVERTURNING

Another hazard that may go unnoticed is the risk of **equipment overturning**. This is particularly relevant when operating cranes, excavators, or any machinery on **uneven ground**. Operators may not realize when they are exceeding the equipment's **stability limits**.

Best Practices: Always **assess the ground conditions** before operating. **Use stabilizers** & ensure that the equipment is on **level ground** whenever possible. Always be mindful of how much weight you are lifting or transporting. Overloading can lead to tipping, which can be catastrophic.

MOVING PARTS AND PINCH POINTS

Heavy equipment often contains various **moving parts** that can pose serious risks if not properly managed. Pinch points are areas where **two parts move together**, and they can easily trap a worker's hand or body part. For example, the area where a crane's boom connects to its base can create a pinch point if proper caution isn't exercised.

Best Practices: Always be aware of your surroundings and where your body is **in relation to moving parts**. Keep hands & feet clear of pinch points during operation. Ensure all operators are trained to **recognize & avoid** pinch points. Regularly review **Safety Procedures** related to moving machinery.



ENVIRONMENTAL FACTORS

Heavy equipment does not operate in a vacuum. Environmental factors such as **weather conditions** can change the safety dynamics significantly. Rain, snow, and even extreme heat can affect **equipment performance** and worker safety.

Best Practices: Be aware of weather conditions and how they impact your work. Ensure that **all equipment is maintained** according to manufacturer guidelines, especially before operating in **adverse conditions**.

YOUR ROLE IN SAFETY

Understanding and addressing Heavy Equipment Hazards is essential for maintaining a safe work environment. By recognizing **blind spots**, managing **equipment stability**, avoiding **pinch points**, and considering **environmental factors**, we can all contribute to a culture of safety.